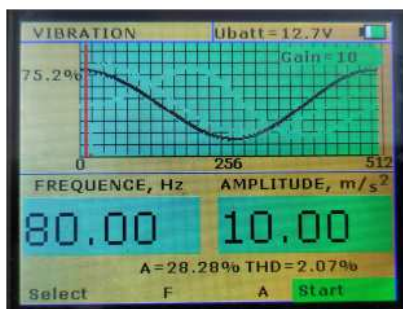
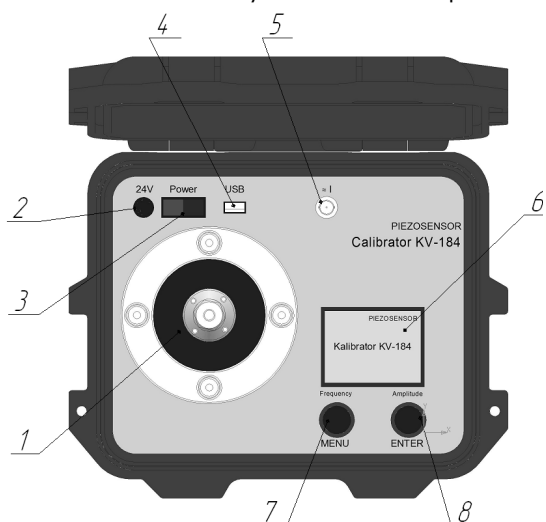




CALIBRATOR

KV-184

The KV-184 is a fully self-contained, battery-powered device designed for calibration, piezoelectric vibration converters with or without built-in electronic circuitry, as well as proximimeters. Calibration can be performed by vibration acceleration, vibration velocity and vibration displacement.



Calibrator KV-184. 1 - electromagnetic vibrator; 2 - power connector (24 V); 3 - toggle switch; 4 - data transfer connector (USB); 5 - connector for the tested vibration converter (VPE-079) (optional); 6 - display; 7 - encoder for setting the frequency (Frequency) and selection (Select) of the working window, 8 - encoder for setting the amplitude (Amplitude) and Start-Stop.

Options	Meaning
Frequencies during vibration reproduction, Hz	10; 20; 45; 80; 159.15; 315; 500; 630; 1000
Base frequencies, Hz	45, 80
Playback range (up to 0.2 kg):	
- the range of vibration displacement (at a frequency of 45 Hz), microns	1000
- RMS vibration velocity (at a frequency of 80 Hz), mm/s	25
- RMS vibration acceleration (at a frequency of 45 Hz), m/s ²	35
Discreteness of vibration frequency readout, Hz	1
Vibration acceleration counting rate, m/s ²	0.1
Limits of permissible relative error when reproducing frequency Hz, %	± 0.5
Limits of permissible relative error when reproducing vibration A = 10 m/s ² at base frequencies 45, 80, 159.15 Hz, vibration acceleration (RMS), %	± 2
Limits of permissible relative error when measuring in the operating range of amplitudes, vibration acceleration (RMS)	± 2
Limits of permissible relative error, when measured in the operating frequency range, vibration acceleration (RMS), %- from 20 to 1000 Hz	±2
Relative coefficient of transverse vibrations of the shaker, %	
- at the base frequency	5
- on other frequencies	15
Nonlinear distortion coefficient of the shaker, %	
- at base frequencies (45; 80; 159,15)	5
- at other frequencies within the measuring range	10
Power consumption, VA	
- idling	5
- maximum	40
Supply voltage, V	198 to 242
Power supply alternating current frequency, Hz	50 ±0.5
Dimensions, mm	300x250x200
Weight, kg	9
Time of continuous work, hour	0.5

Number of teeth 30 pcs. Material 20X13.